

AXIAL CYLINDRICAL ROLLER AND SPHERICAL ROLLER BEARINGS

These bearings run longitudinally without clearance and with pre-load. They carry bi-directional axial and longitudinal loads and a swinging moment.

The individual components of the bearing are matched to each other and the components of different bearings must not be changed during mounting.

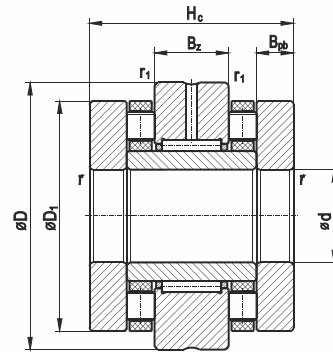
Characteristics:

Bearings consist of an outer ring with a rolling and radial raceway, an inner ring, spacers, and thrust and radial bearing units.

The accuracy class of the thrust bearing is P4, while that of the radial bearing is P6.

Application:

For bearing supports, e.g. thrust screws in numerically controlled precision machine tools.



| Dimensions | | | | | | Transverse load capacity | | Longitudinal load capacity | | Limit speed | Designation |
|------------|-----|----------------|----------------|----------------|-----------------|--------------------------|---------------------------|----------------------------|----------------------------|-------------|-------------|
| d | D | D ₁ | H _c | B _z | B _{pb} | C Movement | C _o Resting | C _a Movement | C _{oa} Resting | | |
| mm | mm | mm | mm | mm | mm | kN | kN | kN | kN | min.-1 | |
| 20 | 52 | 42 | 46 | 16 | 10 | 14,6 | 22,1 | 33,0 | 75,0 | 7000 | O&T 2052TN |
| 25 | 57 | 47 | 50 | 20 | 10 | 22,5 | 35,0 | 35,0 | 85,0 | 6000 | O&T 2557TN |
| 30 | 62 | 52 | 50 | 20 | 10 | 24,0 | 41,0 | 38,5 | 100,0 | 5500 | O&T 3062TN |
| 30 | 80 | 68 | 66 | 20 | 14 | 24,0 | 41,0 | 100,0 | 200,0 | 4400 | O&T 3080TN |
| 35 | 70 | 60 | 54 | 20 | 11 | 25,7 | 46,8 | 49,0 | 120,0 | 4800 | O&T 3570TN |
| 40 | 75 | 65 | 54 | 20 | 11 | 27,2 | 52,5 | 53,0 | 135,0 | 4400 | O&T 4075TN |
| 40 | 90 | 78 | 75 | 25 | 16 | 38,0 | 74,0 | 117,0 | 315,0 | 4900 | O&T 4090TN |
| 50 | 110 | 95 | 82 | 25 | 17,5 | 42,0 | 80,0 | 173,0 | 480,0 | 3100 | O&T 50110TN |
| 60 | 120 | 105 | 82 | 25 | 17,5 | 44,0 | 92,0 | 187,0 | 550,0 | 2700 | O&T 60120TN |