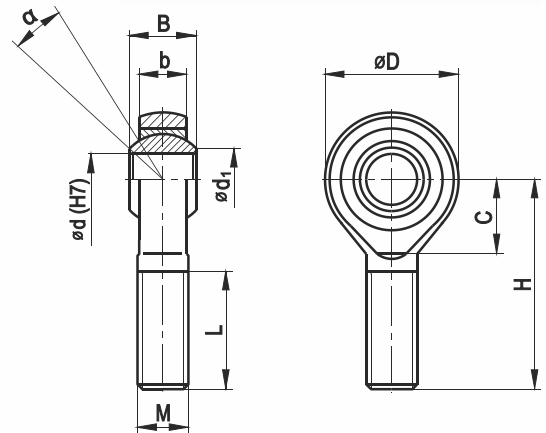


## ROD ENDS WITH MALE THREAD

A standard draw-rod head consists of a cast steel L600 body and self-lubricating spherical plain bearings - sliding steam steel/bronze sintered with the addition of graphite, saturated with service oil. Operating temperature up to 120°C. The rod ends are used in machines and technical equipment with fluctuating movements in the light, food, printing, paper, tobacco, and transport industries. We also offer a stainless steel version.



### Delivery status:

Ready to install. Outer ring made of sintered bronze saturated with operating oil, do not wash. Protected by maintenance oil, packed in corrosion inhibited anti-corrosion paper.

| Dimensions |      |    |      |     |      |                  |    |                |        | Designation <sup>1)</sup> |            |
|------------|------|----|------|-----|------|------------------|----|----------------|--------|---------------------------|------------|
| d          | D    | B  | b    | H   | C    | M <sup>d1)</sup> | L  | d <sub>1</sub> | α      |                           |            |
| mm         | mm   | mm | mm   | mm  | mm   | mm               | mm | mm             | grades |                           |            |
| 5          | 21   | 9  | 6,8  | 33  | -    | M5               | 18 | 9,4            | 13     | PGAKR 5                   | PGAKL 5    |
| 6          | 21   | 9  | 6,8  | 36  | -    | M6               | 21 | 9,4            | 13     | PGAKR 6                   | PGAKL 6    |
| 6          | 21,5 | 9  | 6,8  | 50  | -    | M8               | 33 | 9,4            | 13     | PGAKR 6/M8                | PGAKL 6/M8 |
| 8          | 24   | 12 | 9    | 42  | -    | M8               | 22 | 10,6           | 14     | PGAKR 8                   | PGAKL 8    |
| 10         | 29   | 14 | 10,5 | 48  | -    | M10              | 26 | 12,8           | 13     | PGAKR 10                  | PGAKL 10   |
| 12         | 32   | 16 | 12   | 54  | -    | M12              | 28 | 15             | 13     | PGAKR 12                  | PGAKL 12   |
| 14         | 42   | 21 | 15   | 60  | 23,5 | M14              | 34 | 19,2           | 15     | PGAKR 14                  | PGAKL 14   |
| 16         | 42   | 21 | 15   | 66  | 23,5 | M16              | 37 | 19,2           | 15     | PGAKR 16                  | PGAKL 16   |
| 18         | 50   | 25 | 18   | 72  | 27   | M18x1,5          | 41 | 24,3           | 15     | PGAKR 18                  | PGAKL 18   |
| 20         | 50   | 25 | 18   | 78  | 27   | M20x1,5          | 45 | 24,3           | 15     | PGAKR 20                  | PGAKL 20   |
| 25         | 60   | 31 | 22   | 94  | 32   | M24x2            | 55 | 29,5           | 15     | PGAKR 25                  | PGAKL 25   |
| 30         | 70   | 37 | 25   | 110 | 37   | M30x2            | 66 | 34,8           | 17     | PGAKR 30                  | PGAKL 30   |

1) For heads with right-hand thread marking R, e.g. PGAKR 10. For heads with left-hand thread marking L, e.g. PGAKL 10